



Rabbit anti IGF-1R (pY1161) Polyclonal Antibody

Alternative Name(s): Insulin-like growth factor 1 receptor; IGF-1R; CD221

Order Information

- **Description:** IGF-1R (pY1161)
- **Catalogue:** 500-12304
- **Lot:** See label
- **Size:** 100ug/200ul
- **Host:** Rabbit
- **Clone:** nan
- **Application:** IHC(P), WB, IP
- **Reactivity:** Hu, Ms, Rt

ANTIGEN PREPARATION

A synthetic peptide corresponding to residues surrounding Tyrosine 1161 of human IGF1R.

BACKGROUND

CD221, also known as insulin-like growth factor 1 receptor (IGF1R), is a 135 kD transmembrane receptor. It is widely expressed on lymphoid and myeloid cells as well as non-haematopoietic cells. CD221 is a tyrosine kinase receptor and the ligands for CD221 are insulin-like growth factor 1 and 2 (IGF-1 and IGF-2), the polypeptide hormones similar in molecular structure to insulin. IGF-1/2 binding activates downstream PI3K and MAPK pathways and plays an important role in cell growth. Recent studies reveal its function of recruiting immune cells during tissue repair.

PURIFICATION

The Rabbit IgG is purified by site-modified Epitope Affinity Purification.

FORMULATION

This affinity purified antibody is supplied in sterile Tris-buffered saline (pH7.2) containing antibody stabilizer

SPECIFICITY

This antibody recognizes STAT6 (pY641) with a phosphorylated sites of Tyr641. It does not cross-react with non-phosphospecific peptide.

STORAGE

The antibodies are stable for 24 months from date of receipt when stored at -20oC to -70oC. The antibodies can be stored at 2oC-8oC for three month without detectable loss of activity. Avoid repeated freezing-thawing cycles.

APPLICATIONS/SUGGESTED WORKING DILUTIONS*

- Western Blot: 0.1-1 µg/ml
- ELISA: 0.01-0.1 µg/ml
- Immunoprecipitation: 2-5 µg/ml
- IHC: 2-10 µg/ml
- Flow cytometry: Not tested
- Molecular Weight: nan
- Positive Control: Kidney Tissue
- Cellular Location: Cell Membrane

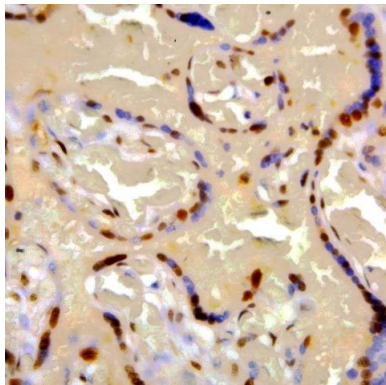
*Optimal dilutions should be determined by researchers for the specific applications.

FOR RESEARCH USE ONLY.

AbboMax, Inc 2528 Qume Drive, Suite 8, San Jose, California 95131, USA
1 408-573-1898 (Tel). 1 408-573-1858 (Fax). www.abbomax.com info@abbomax.com



DATA ATTACHMENTS



Immunohistochemistry: Human Placenta (FFPE) stained with Rabbit anti-IGF-1R (pY1161) (Cat# 500-12304) at 1:200 for 10 min @ RT. Staining of formalin-fixed tissue requires boiling tissue sections in 10 mM Citrate Buffer, pH 6.0 for 10 min followed by cooling at RT for 20 min.

REFERENCES

FOR RESEARCH USE ONLY.

AbboMax, Inc 2528 Qume Drive, Suite 8, San Jose, California 95131, USA
1 408-573-1898 (Tel). 1 408-573-1858 (Fax). www.abbomax.com info@abbomax.com